

# Psychology: Curriculum Mapping

**Paper 1:** Social influence, memory, attachment and psychopathology

**Paper 2:** Approaches, biopsychology and research methods.

**Paper 3:** Issues and debates, schizophrenia, gender and aggression.

**Final Exams**

Revision



**Research Methods: Mastery**



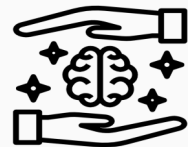
**Aggression:** Do we learn aggression or is it innate with a biological cause? Is aggression necessary for survival? Why does institutional aggression occur and what effects does the media have on aggression?

**Summer Term**

**Schizophrenia:** The diagnosis and classification of SZ with a focus on reliability and validity. Biological and psychological explanations and treatments for SZ. The interactionist approach in explaining and treating SZ.



Mock Exams



**Biopsychology:** A detailed look at the brain; localisation of function and hemispheric lateralisation, recovery of the brain and ways we can study the brain. Biological rhythms: the types and the regulators of the rhythms.

**Research Methods:** Scientific processes, data handling and analysis and Inferential testing.



**Spring Term**

**Gender:** Sex and gender definitions.

**Issues and Debates:**

**Year 13 Autumn Term**

How do we measure androgyny?  
Biological influences on gender  
How do children acquire knowledge about gender development?  
What are the effects of Media and culture on gender?  
What does Freud say about gender?



The issue of ethical implications in research. The remaining debates in psychology: free will and determinism and holism and reductionism.  
Exploring the issues of gender and culture bias in Psychological research.  
Are we a product of nature or nurture?



Mock exams

How do I revise in Psychology?



**Psychopathology:** What are the clinical characteristics for depression, phobic disorders and OCD? How can we explain psychological disorders and what are the treatments?



**Approaches:** Where did psychology originate from? How do the approaches explain behaviour from different perspectives. Comparison of the approaches.



**Biopsychology:** A detailed look at the divisions of the nervous system and synaptic transmission.  
How does our body react in times of short term stress?

**Summer Term**

**Spring Term**

**Social Influence:** Why do people comply or obey? Are certain personalities more or less likely to obey? How does the minority influence the majority?



**Research Methods:** Scientific processes in research. Data analysis



**Attachment:** How do attachments form and what are the different types? Explanations for attachment and the consequences of disrupting attachments. The influence of early attachment on childhood



**Research Methods:** Scientific processes in research -non experimental methods.

**Year 12 Autumn Term**

**Research Methods:** Scientific processes in research -experimental methods



**Memory:** Models of memory. Why do we forget information? How does anxiety affect memory? How can the police benefit from research into eyewitness testimony?



e