



CHATHAM & CLARENDON GRAMMAR SCHOOL

Child Protection Policy

Approved by Governors: January 2025
Based on DfE guidance September 2023/KCSIE 2024

Key Contact Personnel in School

Designated Safeguarding Leads:

Debra Liddicoat, Headteacher
Tom Richford, Assistant Headteacher
Craig Lowis, Head of 6th Form
Stuart Wakefield, Assistant Head of 6th Form
Kersten Jebbett, Assistant Head of 6th Form
Lisa Clements, Senior Tutor Upper School
Lucy Harris, Senior Tutor Lower School

Named Safeguarding Governor:

Alistair Milne (Lead)
David Harris (Deputy)

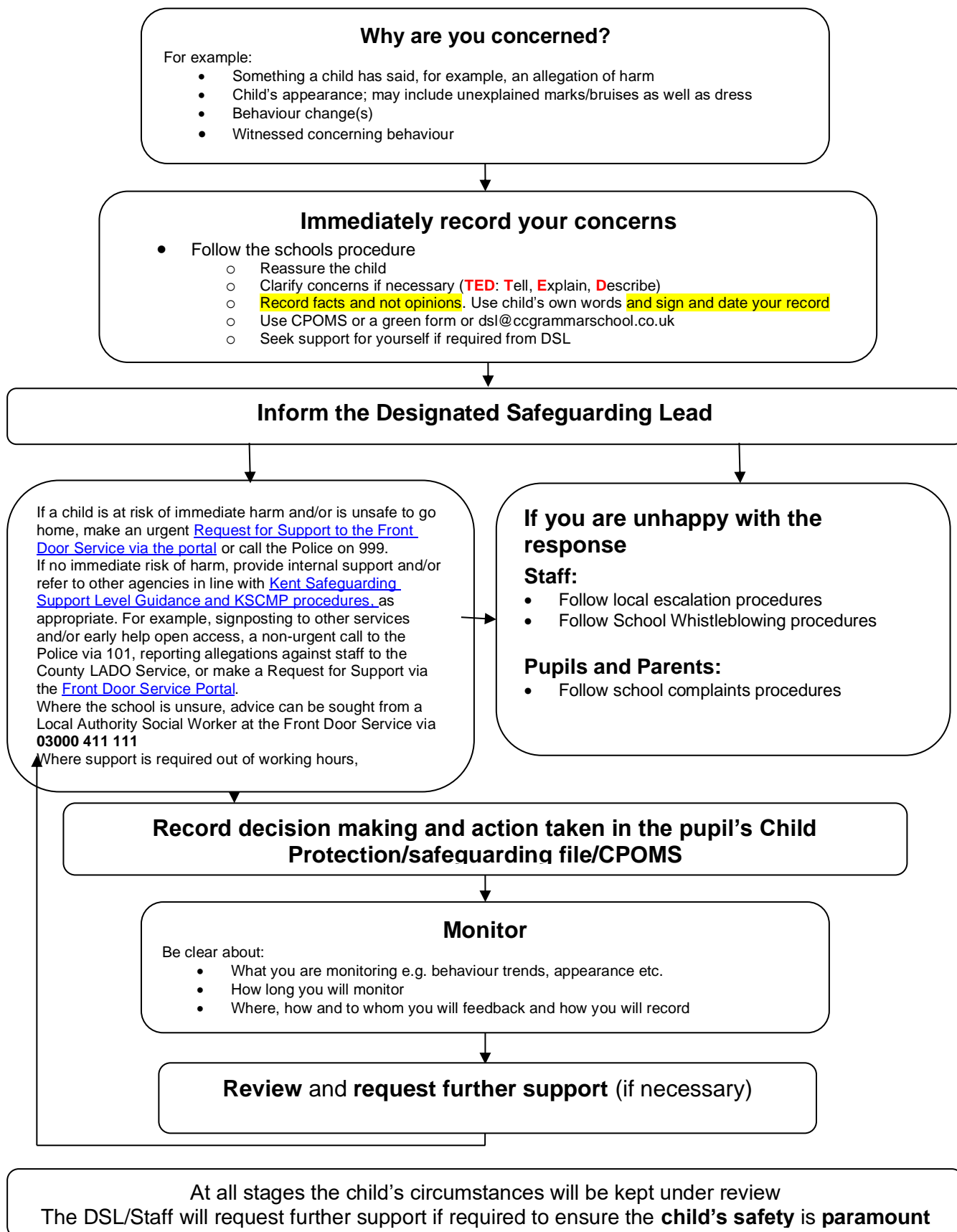
All staff should have access to this policy and email the Headteacher to the effect that they have read and understood its content.

Date of next review: January 2026

Contents

	Page no
What to do if you have a welfare concern - flowchart	3
Introduction and Ethos	4
1. Definition of Safeguarding	5
2. Context	6
3. Related Safeguarding Policies	7
4. Key Responsibilities	7
5. Recognition and Types of Abuse and Neglect	9
6. Safeguarding and Child Protection Procedures	9
7. Record Keeping	12
8. Multi-Agency Working	12
9. Confidentiality and Information Sharing	13
10. Complaints	14
11. Staff induction, Awareness and Training	14
12. Safe Working Practice	15
13. Staff Supervision and Support	15
14. Safer Recruitment	15
15. Child on Child Abuse	18
16. Safeguarding Children at Greater Risk of Harm	26
17. Online Safety	29
18. Curriculum and Staying Safe	31
19. The Use of School Premises by Other Organisations	31
20. Security	31
21. Monitoring and Review	32
22. Local Support	32
Appendix 1 Categories of Abuse	33
Appendix 2 National Support	35

What to do if you have a welfare concern in Chatham & Clarendon Grammar School



Introduction and Ethos

- Chatham & Clarendon Grammar School (hereafter referred to as CCGS) is a community and all those directly connected (staff, volunteers, governors, parents, families and pupils) have an essential role to play in making it safe and secure. Chatham & Clarendon Grammar School recognises our statutory responsibility to safeguard and promote the welfare of all children.
- CCGS recognises the importance of providing an ethos and environment within school that will help children to be safe and feel safe. In our school children are respected and encouraged to talk openly.
- Our school core safeguarding principles are:
 - We are an important part of the wider safeguarding system for children.
 - It is our whole school responsibility to safeguard and promote the welfare of children.
 - All children (defined as those up to the age of 18) regardless of age, gender, ability, culture, race, language, religion or sexual identity, have equal rights to protection.
 - All children have a right to be heard and to have their wishes and feelings taken into account.
 - All our staff understand safe professional practice and adhere to our safeguarding policies.

1. Definition of Safeguarding

- In line with 'Working Together to Safeguard Children' 2023 and KCSIE, safeguarding and promoting the welfare of children is defined for the purposes of this policy as:
 - providing help and support to meet the needs of children as soon as problems emerge
 - protecting children from maltreatment, whether that is within or outside the home, including online
 - preventing impairment of children's mental and physical health or development
 - ensuring that children grow up in circumstances consistent with the provision of safe and effective care
 - promoting the upbringing of children with their birth parents, or otherwise their family network, whenever possible and where this is in the best interests of the child(ren)
 - taking action to enable all children to have the best outcomes.
- Child protection is part of safeguarding and promoting the welfare of all children and is defined as activity that is undertaken to protect specific children who are suspected to be suffering, or likely to suffer, significant harm. This includes harm that occurs inside or outside the home, including online.
- All safeguarding policies will be reviewed on an annual (minimum) basis by the Governing Body which has responsibility for oversight of school safeguarding and child protection systems. The Head Teacher will ensure regular reporting on safeguarding activity and systems in school to the Governing Body. The Governing Body will not receive details of individual pupil situations or identifying features of families as part of their oversight responsibility.

- There are four main elements to our child protection policy
 - **Prevention** (e.g. positive, supportive, safe school culture, curriculum and pastoral opportunities for children, safer recruitment procedures);
 - **Protection** (by following the agreed procedures, ensuring all staff are trained and supported to respond appropriately and sensitively to safeguarding concerns);
 - **Support** (for all pupils, parents and staff, and where appropriate specific intervention for those who may be at risk of harm);
 - **Working with parents and other agencies** (to ensure appropriate communications and actions are undertaken).
- The procedures contained in this policy apply to all staff (including temporary staff and volunteers) and governors and are consistent with those of Kent Safeguarding Children Board (KSCB).

2. Context

- This policy has been developed in accordance with the principles established by the Children Acts 1989 and 2004 and related guidance. This includes:
 - DfE guidance Keeping Children Safe in Education 2024 (KCSIE)
 - Working Together to Safeguard Children (WTSC)
 - Ofsted guidance 'Inspecting safeguarding in early years, education and skills settings' (2019)
 - Framework for the Assessment of Children in Need and their Families (2000)
 - Kent and Medway Safeguarding Children Procedures (Online)
 - The Education Act 2002
 - The Human Rights Act 1998
 - The Equality Act 2010
- Section 175 of the Education Act 2002 requires school governing bodies, local education authorities and further education institutions to make arrangements to safeguard and promote the welfare of all children who are pupils at a school, or who are students under 18 years of age. Such arrangements will have to have regard to any guidance issued by the Secretary of State.
- Chatham & Clarendon Grammar School will follow local or national guidance in response to any emergencies. We will amend this policy and our procedures as necessary but regardless of the action required, our safeguarding principles will always remain the same and the welfare of the child is paramount.
- The school acknowledges that this policy recognises a range of specific safeguarding issues including (but not limited to):
 - Bullying (including cyberbullying)
 - Children and the court system
 - Children Missing Education (CME)
 - Children with family members in prison
 - Child missing from home or care
 - Child on Child Abuse (formerly Peer on Peer Abuse)
 - Child Sexual Exploitation (CSE)
 - Child criminal exploitation (County Lines)
 - Data Protection and Image sharing
 - Domestic Abuse
 - Homelessness
 - Drugs and alcohol misuse
 - Fabricated or induced illness
 - Faith abuse

- Female Genital Mutilation (FGM)
- Forced marriage
- Gangs and youth violence
- Gender based abuse and violence against women and girls
- Hate
- Honour based abuse
- Human trafficking and modern slavery
- Mental health
- Missing children and adults
- Online safety
- Prevent duty (radicalisation and extremism)
- Private fostering
- Relationship abuse
- Sexual violence and sexual harassment between children
- Social Media
- Youth produced sexual imagery or “Sexting”

3. Related Safeguarding Policies

- . This policy is one of a series in the school’s integrated safeguarding portfolio and should be read in conjunction with the policies as listed below:
 - Positive Behaviour Management
 - Online Safety and Social Media
 - Anti-Bullying
 - Data Protection and Information Sharing
 - Image Use
 - Relationship, Sex, Health Education Policy
 - Health and Safety
 - Attendance
 - Risk Assessments (e.g. school trips, use of technology)
 - First Aid and Accidents
 - Managing Allegations Against Staff
 - Safer Recruitment
 - Staff Behaviour Policy (including Acceptable Use of Technology)
 - Safer Recruitment
 - Whistleblowing

Also see Keeping children safe in education 2024

Supporting Guidance (to be read and followed alongside this document

- Guidance for Safer Working Practice for Adults who Work with Children and Young People in Education Settings - [Safer Recruitment Consortium](#)
- [What to do if you are worried a child is being abused](#)

4. Key Responsibilities

- The governing body have read and will follow KCSIE 2024.
- The school has a nominated governor for safeguarding. The nominated governor will take the lead role in ensuring that the school has an effective policy which interlinks with other related policies; that locally agreed procedures are in place and being followed; and that the policies are reviewed at least annually and when required.
- The Governing Body, Headteacher and Leadership Team will ensure that the DSL's are properly supported in their role.

4.1 Designated Safeguarding Lead (DSL)

- The school has appointed the Head Teacher, Mrs Liddicoat, as the Designated Safeguarding Lead (DSL). The DSL has the overall responsibility for the day-to-day oversight of safeguarding and child protection systems in school.
- The DSL will undergo appropriate and specific training to provide them with the knowledge and skills required to carry out their role. The DSL and any deputy DSL's training will be updated formally biannually if face to face, or every year if through the National College or any other virtual training course, but their knowledge and skills will be updated through a variety of methods at regular intervals.
- Deputy DSLs are trained to the same standard as the DSL. Whilst the activities of the DSL may be delegated to the deputies, the ultimate lead responsibility for safeguarding and child protection remains with the DSL and this responsibility will not be delegated.
- **It is the role of the DSL to:**
 - Act as the central contact point for all staff to discuss any safeguarding concerns
 - Maintain a confidential recording system for safeguarding and child protection concerns, (CPOMS)
 - Coordinate safeguarding action for individual children
 - In the case of Children Looked After the DSL should have the details of the child's social worker and the name of the virtual school head in the authority that looks after the child (with the DSL liaising closely with the designated teacher)
 - Liaise with other agencies and professionals in line with KCSIE and WTSC
 - Ensure that locally established referral procedures are followed as necessary
 - Represent, or ensure the school is appropriately represented at multi-agency safeguarding meetings (including Child Protection conferences)
 - Manage and monitor the school's role in any multi-agency plan for a child.
 - Be available during term time (during school hours) for staff in the school to discuss any safeguarding concerns
 - Ensure all staff access appropriate safeguarding training and relevant updates in line with the recommendations within KCSIE (2024)
 - Taking lead responsibility for online safety, including understanding the filtering and monitoring systems and processes in place.
 - Helping promote educational outcomes by sharing the information about the welfare, safeguarding and child protection issues that children, including children with a social worker, are experiencing, or have experienced, with teachers and school leadership staff.

- Ensuring all staff access appropriate safeguarding training and relevant updates in line with the recommendations within KCSIE.
- Liaising with the headteacher to inform them of any safeguarding issues, especially ongoing enquiries under section 47 of the Children Act 1989 and police investigations. This includes being aware of the requirement for children to have an Appropriate Adult ([PACE Code C 2019](#))

4.2 Members of Staff

- **All members of staff have a responsibility to:**
 - To provide a safe environment in which children can learn.
 - be aware of the indicators of abuse, neglect and exploitation so that they can identify cases of children who may need help or protection.
 - know what to do if a child tells them that they are being abused, neglected, or exploited and understand the impact this can have upon a child.
 - be able to identify and act upon indicators that children are, or at risk of developing mental health issues.
 - be prepared to identify children who may benefit from early help and understand the early help process and their role in it.
 - Consider wider environmental factors in a child's life that may be a threat to their safety and/or welfare.
 - To understand your schools safeguarding policies and systems.
 - To undertake regular and appropriate training which is regularly updated.
 - Be aware of the process of making referrals to children's social care and statutory assessment under the Children Act 1989
 - Know how to maintain an appropriate level of confidentiality.
 - reassure children who report concerns that they are being taken seriously and that they will be supported and kept safe.
 - act in line with Teachers' Standards 2012 which state that teachers (including headteachers) should safeguard children's wellbeing and maintain public trust in the teaching profession as part of their professional duties.

4.3 Children and Young People

- **Children and young people (pupils) have a right to:**
 - Contribute to the development of school safeguarding policies
 - Confidently report abuse, neglect or exploitation, knowing their concerns will be treated seriously, and knowing they can safely express their views and give feedback.
 - Receive help from a trusted adult.
 - Learn how to keep themselves safe by recognising when they are themselves at risk and how to get help when they need it, including online.

4.4 Parents and Carers

- **Parents/carers have a responsibility to:**
 - Understand and adhere the relevant school/policies and procedures. Talk to their children about safeguarding issues with their children & support the school in their safeguarding approaches.
 - Identify behaviours which could indicate that their child is at risk of harm including online and seek help and support from the school, or other agencies.

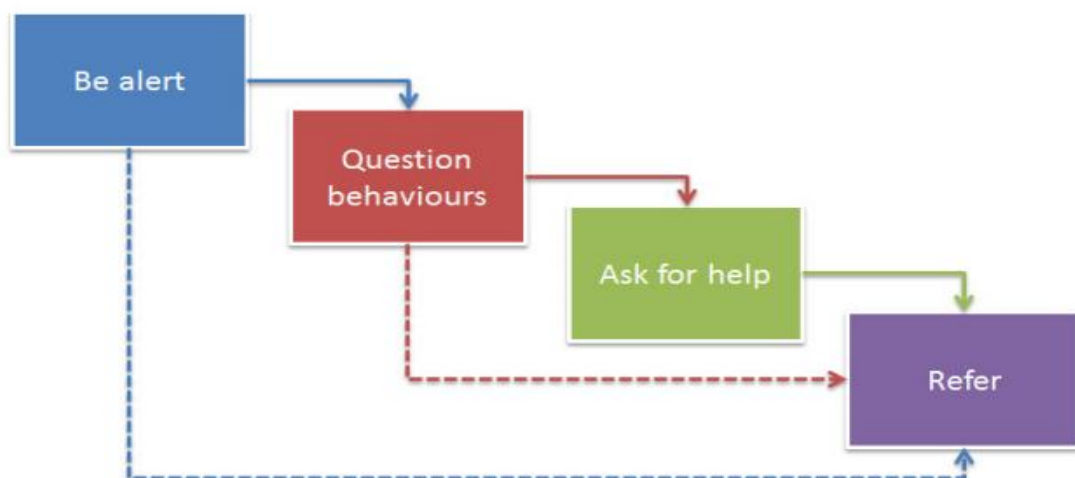
Parents can obtain a copy of the school Child Protection Policy and other related policies on request and can view them via the school website <http://www.ccgrammarschool.co.uk>

5. Recognition and Types of Abuse and Neglect

- All staff in school should be aware of the definitions and indicators of abuse and neglect. There are four categories of abuse:
 - Physical abuse
 - Sexual abuse
 - Emotional abuse
 - Neglect
- Members of staff are aware that child welfare concerns may arise in many different contexts and can vary greatly in terms of their nature and seriousness.
- The warning signs and symptoms of child abuse and neglect can vary from child to child. Children also develop and mature at different rates, so what appears to be worrying behaviour for a younger child might be normal for an older child.
- Parental behaviours' may also indicate child abuse or neglect, so staff should also be alert to parent-child interactions or concerning parental behaviours; this could include parents who are under the influence of drugs or alcohol or if there is a sudden change in their mental health.
- By understanding the warning signs, we can respond to problems as early as possible and provide the right support and services for the child and their family. It is important to recognise that a warning sign doesn't automatically mean a child is being abused.

6. Safeguarding and Child Protection Procedures

- CCGS adheres to the KSCB Safeguarding Children Procedures. The full KSCB procedures and additional guidance relating to specific safeguarding issues can be found on the KSCB website www.kscb.org.uk
- All members of staff are expected to be aware of and follow this approach:



- It may not always be appropriate to go through all four stages sequentially and if a child is in immediate danger or is at risk of harm, a request for support should be made immediately to Children's Social Work Services and/or the police.
- The School recognises that concerns may arise in many different contexts and can vary greatly in terms of their nature and seriousness. The indicators of child abuse, neglect and exploitation can vary from child to child. Children develop and mature at different rates, so what appears to be worrying behaviour for a younger child might be normal for an older child. It is important to recognise that indicators of abuse, neglect and exploitation do not automatically mean a child is being harmed, however all concerns should be taken seriously and will be explored by the DSL on a case-by-case basis.
- **The role of the school in situations where there are child protection concerns is NOT to investigate but to recognise and refer.**

Responding to child protection concerns

If staff are concerned about the safety or welfare of a child, they are expected to:

- listen carefully to child, reflecting back the concern.
- use the child's language.
- be non-judgmental.
- avoid leading questions; only prompting the child where necessary with open questions to clarify information where necessary. For example, who, what, where, when or Tell, Explain, Describe (TED).
- not promise confidentiality as concerns will have to be shared further, for example, with the DSL and potentially Integrated Children's Services.
- be clear about boundaries and how the report will be progressed.
- record the concern using the facts as the child presents them, in line with school record keeping requirements.
- inform the DSL (or deputy), as soon as practically possible.
- All staff are made aware that early information sharing is vital for the effective identification, assessment, and allocation of appropriate service provision, whether this is when problems first emerge, or where a child is already known to other agencies. Staff will not assume a colleague, or another professional will act and share information that might be critical in keeping children safe.
- CCGS will respond to safeguarding concerns in line with the Kent Safeguarding Children Multi-Agency Partnership procedures (KSCMP).
 - The full KSCMP procedures and additional guidance relating to reporting concerns and specific safeguarding issues can be found on their website: www.kscmp.org.uk
- In Kent, Early Help and Preventative Services and Children's Social Work Services are part of [Integrated Children's Services](#) (ICS) and are accessed via the 'Front Door Service'/[Kent Children's Services Portal](#).
- 'Early help' is defined in 'Working together to safeguard children' as support for children of all ages that improves a family's resilience and outcomes or reduces the chance of a problem getting worse. It is not an individual service, but a system of support delivered by local authorities and their partners, including education providers, working together and taking collective responsibility to provide the right provision in their area.

- If early help support is appropriate, the DSL (or a deputy) will lead on exploring internal resources available and liaising with other universal or additional services available via local agencies.
 - Where Intensive Support Early Help (provided by ICS, outlined in the [KSCMP support levels guidance](#)) is considered to be appropriate, the DSL (or deputy) will make a 'request for support' via the [Kent Children's Services Portal](#).
 - Staff, including the DSL, may be required to work with other agencies and professionals in an early help assessment.
 - The DSL will keep all Early Help cases under constant review and consideration will be given to escalating concerns and/or seeking advice from the Front Door Service if the situation does not appear to be improving or is getting worse.
- Where a child is suffering, or is likely to suffer from harm, or is in immediate danger (for example, under section 17 or 47 of the Children Act), intensive or specialist support is required and a 'request for support' will be made immediately to Kent [Integrated Children's Services](#) (via the [portal](#)) and/or the police, in line with the [Kent Support Level Guidance and KSCMP procedures](#).
 - Chatham & Clarendon Grammar School recognise that in situations where there are immediate child protection concerns for a child as identified in line with Support Level Guidance, it is NOT to investigate as a single agency, but to act in line with KSCMP guidance which may involve multi-agency decision making.
 - The DSL may seek advice or guidance from a social worker via the Front Door Service before deciding next steps.
- The DSL, or a deputy DSL in the absence of the DSL will have the overall responsibility for making referrals. However, all staff are made aware of the local process for making referrals to Integrated Children's Services and for statutory assessments under the Children Act 1989, especially section 17 (children in need) and section 47 (a child suffering, or likely to suffer, significant harm) that may follow a referral, along with the role they might be expected to play in such assessments.
- If staff have any concerns about a child's welfare, they are expected to act on them immediately. If staff are unsure if something is a safeguarding issue, they will speak to the DSL (or deputy). If in exceptional circumstances, a DSL is not available, this should not delay appropriate action being taken by staff.
 - Staff will speak to a member of the senior leadership team, request a consultation with a social worker from the Front Door Service, or make a request for support to the Front Door Service themselves; for contact information, see flowchart on page 3.
 - In these circumstances, any action taken by staff will be shared with a DSL as soon as is possible.
- In the event of a request for support to the Front Door Service being necessary, parents/carers will be informed and consent to this will be sought by the DSL in line with guidance provided by KSCMP and ICS. Parents/carers will always be informed in the case of a request for support being submitted by the school, unless there is a valid reason not to do so, for example, if informing them may put a child at risk of harm or could undermine a criminal investigation.
- If, after a request for support or any other planned external intervention, a child's situation does not appear to be improving, or concerns regarding receiving a decision or the decisions made, staff or the DSL will re-refer (if appropriate) and/or DSLs will follow the [Kent Escalation and Professional Challenge Policy](#) to ensure their

concerns have been addressed and, most importantly, that the child's situation improves.

- DSLs and staff will be mindful of the need for the school to ensure any activity or support implemented to support children and/or families is recorded. Support provided by the school where families are struggling will be overseen and reviewed by the DSL on a regular basis to ensure activity does not obscure potential safeguarding concerns from the wider professional network.

7. Record Keeping

- Staff will record any welfare concern that they have about a child on the school's online safeguarding platform (**CPOMS**) Records will be completed and uploaded as soon as possible after the incident/event, using the child's words.
- All safeguarding concerns, discussions and decisions (and justifications for those decisions) will be recorded on CPOMS. If members of staff are in any doubt about recording requirements, they should discuss their concerns with DSL.
- **Incident/Welfare concern forms (green forms) are kept in the staff room, these should be used only when the online platform is unavailable or for support staff/peripatetic teachers who do not have access to the online platform. Staff may also report concerns via email using: dsl@ccgrammarschool.co.uk**
- Safeguarding records are kept for individual children and are maintained separately from all other records relating to the child in the school. Safeguarding records are kept in accordance with data protection legislation and are retained centrally and securely by the DSL. Safeguarding records are shared with staff on a 'need to know' basis only.
- All child protection records will be transferred in accordance with data protection legislation to the child's subsequent school, under confidential and separate cover as soon as possible; within 5 days for an in-year transfer or within the first 5 days of the start of a new term. Child protection files will be transferred securely to the new DSL, separately to the child's main file, and a confirmation of receipt will be obtained
- In addition to the child protection file, the DSL will also consider if it would be appropriate to share any information with the DSL at the new school or college in advance of a child leaving, for example, information that would allow the new school or college to continue to provide support.
- Where the school receives child protection files from another setting, the DSL will ensure key staff such as the Special Educational Needs Co-Ordinator (SENCO), will be made aware of relevant information as required.
- Where a student joins the school and no child protection files are received, the DSL will proactively seek to confirm from the previous setting whether any child protections exist for the student, and if so, if the files have been sent.

8. Multi-agency Working

- CCGS recognises and is committed to its responsibility to work with other professionals and agencies in line with statutory guidance (WTSC)

Schools are not the investigating agency when there are child protection concerns, we will

however contribute to the investigation and assessment processes as required. CCGS recognises the importance of multi-agency working and will support attendance at relevant safeguarding meetings, including Child Protection Conferences, Core Groups, Strategy Meetings, Child in Need meetings or other early help multi-agency meetings.

- The School Leadership Team and DSL will work to establish strong and co-operative relationships with relevant professionals in other agencies.
- The School will allow access for Kent Children's Social Work Service and, where appropriate, from a placing local authority, to conduct, or to consider whether to conduct, a section 17 or a section 47 assessment.
- The Headteacher and DSL are aware of the requirement for children to have an Appropriate Adult ([PACE Code C 2019](#)) where there is a need for detention, treatment and questioning by police officers and will respond to concerns in line with our school behaviour policy, which is informed by the DfE '[Searching, screening and confiscation at school](#)' guidance. (**Headteachers and DSLs should access the DfE '[Searching, screening and confiscation at school](#)' guidance**)

9. Confidentiality and Information Sharing

- CCGS recognises that all matters relating to child protection are confidential. The Headteacher or DSL will only disclose information about a student to other members of staff on a 'need to know' basis.
- All members of staff must be aware that whilst they have duties to keep any information confidential, they also have a professional responsibility to share information with other agencies to safeguard children.
- All staff must be aware that they cannot promise a child to keep secrets which might compromise the child's safety or wellbeing.
- DfE Guidance on Information Sharing (July 2018) provides further detail. This document can be found in the Safeguarding Folder on the Staff K Drive.
- The Data Protection Act 2018, and the UK General Data Protection Regulation (UK GDPR) places duties on schools and individuals to process personal information fairly and lawfully and to keep the information they hold safe and secure. The Data Protection Act 2018 and UK GDPR do not prevent the sharing of information for the purposes of keeping children safe. Fears about sharing information must not be allowed to stand in the way of the need to safeguard and promote the welfare and protect the safety of children.
 - CCGS has an appropriately trained Data Protection Officer (DPO) as required to ensure that our school is compliant with all matters relating to confidentiality and information sharing requirements.
 - All staff will be provided with training and information to ensure they have due regard to the relevant data protection principles, which allow them to share and/or withhold personal information. **See Data Protection Policy**
 - KCSIE, the [Information Commissioner's Office](#) (ICO), DfE [Data Protection in schools guidance](#) and DfE '[Information sharing advice for safeguarding practitioners](#)' guidance provides further details regarding information sharing principles and expectations.

10. Complaints

- The school has a **Complaints Procedure** available to parents, pupils and members of staff and visitors who wish to report concerns. This can be found on the school website.
- All reported concerns will be taken seriously and considered within the relevant and appropriate process. Anything that constitutes an allegation against a member of staff or volunteer will be dealt with under the specific **Procedures for Managing Allegations against Staff policy**. This can be found in the Safeguarding Policies Folder in the Staff Information Folder in Sharepoint.

11. Staff Induction, Awareness and Training

- All members of staff have been provided with a copy of Part One of “*Keeping children safe in education*” (2024) which covers Safeguarding information for all staff. School leaders will read the entire document. School leaders and all members of staff who work directly with children will access Annex A within Keeping Children Safe in Education 2024. Members of staff have signed (via Forms) to confirm that they have read and understood Part One and Annex A.
- School leaders, including the DSL and governors/trustees will read KCSIE in its entirety.
- School leaders and all members of staff who work directly with children will read annex B of KCSIE
- The DSL will ensure that all new staff and volunteers (including temporary staff) are aware of the school’s internal safeguarding processes.
- All staff members (including temporary staff and third party) will receive training to ensure they are aware of a range of safeguarding issues. This will be through both face to face training and an online course delivered by the National College and must pass the test at the end of the course. This training is regularly updated and is in line with advice from the local safeguarding partners and explores the Kent processes to follow.
- All staff members (including temporary staff and third party) will receive regular safeguarding (including online safety) and child protection updates, at least annually. Weekly reminders are provided in Monday morning briefings and briefing notes are published so any staff not in briefing do not miss out
- All staff members (including temporary staff) will be made aware of the school’s expectations regarding safe and professional practice via the staff behaviour policy (or code of conduct) and Acceptable Use Policy.
- It is a requirement that all members of staff have access to this policy and sign to say they have read and understood its contents. All staff are expected to re-read this policy at least annually (and following any updates) to ensure they understand our expectations and requirements
- The Head Teacher will provide an annual report to the Governing Body detailing safeguarding training undertaken by all staff and will maintain up to date register of who has been trained.
- Although the school has a nominated lead and Deputy for the governing body, Alistair Milne and David Harris all members of the governing body will access

appropriate safeguarding training which covers their specific strategic responsibilities on a regular basis.

12. Safe Working Practices

- All members of staff are required to work within clear guidelines on Safe Working Practice / the school's Code of Conduct.
- Staff should be aware of the school's **Behaviour Management**, and any physical interventions must be in line with agreed policy and procedures.
- Staff should be particularly aware of the professional risks associated with the use of social media and electronic communication (email, mobile phones, texting, social network sites etc.) and should adhere to the school's Online Safety and Acceptable Use policies.

13. Staff Supervision and Support

- Any member of staff affected by issues arising from concerns for children's welfare or safety can seek support from the DSL.
- The induction process will include familiarisation with child protection responsibilities and procedures to be followed if members of staff have any concerns about a child's safety or welfare.
- The school will provide appropriate supervision and support for all members of staff to ensure that:
 - All staff are competent to carry out their responsibilities for safeguarding and promoting the welfare of children
 - All staff will be supported by the DSL in their safeguarding role.
 - All members of staff have regular reviews of their own practice to ensure they improve over time.

The DSL will also put staff in touch with outside agencies for professional support if they so wish. Staff can also approach organisations such as their Union, the Education Support Partnership, Counselling Service (offered via our insurers, Zurich Municipal) or other similar organisations directly.

14. Safer Recruitment

- CCGS is committed to ensure that it develops a safe culture and that all steps are taken to recruit staff and volunteers who are safe to work with our pupils and staff, this will include online and social media vetting of staff being offered a post at the school.
- The Governing Body and Leadership Team are responsible for ensuring that the school follows safe recruitment processes outlined within guidance.

CCGS is responsible for ensuring that the school maintains an accurate Single Central Record (SCR) in line with statutory guidance.

- The Governing Body will ensure that there is at least one of the persons who conducts an interview has completed safer recruitment training.

- We are also committed to supporting the statutory guidance from the Department for Education on the application of the Childcare (Disqualification) Regulations 2009 and related obligations under the Childcare Act 2006 in schools.
- We advise all staff to disclose any reason that may affect their suitability to work with children including convictions, cautions, court orders, cautions, reprimands and warnings.
- Where the school/college places a student with an alternative provision provider, we continue to be responsible for the safeguarding of that student and will need to satisfy ourselves that the provider can meet the needs of the student.
 - CCGS will obtain written confirmation from the alternative provision provider that appropriate safeguarding checks have been carried out on individuals working at the establishment, i.e., those checks that our school/college would otherwise perform in respect of our own staff.
- Where the school organises work experience placements, we will follow the advice and guidance as identified in Part three of KCSIE.

Allegations/concerns raised in relation to staff, including supply teachers, volunteers and contractors

- Any concerns or allegations about staff will be recorded and dealt with appropriately in line with Part four of KCSIE and the [local Kent allegations arrangements, including discussions as necessary with the Local Authority Designated Officer \(LADO\)](#). In depth information can be found within our 'Managing Allegations against Staff' and/or staff behaviour policy/code of conduct policy. This can be found in the staff information folder on the website.
- Any concerns or allegations about staff will be recorded and dealt with in line with Part four of KCSIE and local [Kent allegations arrangements](#). Ensuring concerns are dealt with effectively will protect those working in or on behalf of the school from potential false allegations or misunderstandings.
- Where headteachers are unsure how to respond, for example if the school is unsure if a concern meet the harm 'thresholds', advice will be sought via the [LADO Education Safeguarding Advisory Service](#) enquiry form.
- In all cases where allegations are made against staff or low-level concerns are reported, once proceedings have been concluded, the headteacher (and if they have been involved, [the LADO](#)) will consider the facts and determine whether any lessons can be learned and if any improvements can be made.
- In the situation that the school receives an allegation relating to an incident that happened when an individual or organisation was using our premises for the purposes of running activities for children (for example community groups, sports associations, or service providers that run extra-curricular activities), we will follow our safeguarding policies and procedures, including informing the LADO.

8.2.1 Concerns that meet the 'harm threshold'

- CCGS recognises that it is possible for any member of staff, including volunteers, governors, contractors, agency and third-party staff (including supply teachers) and visitors to behave in a way that indicates a person would pose a risk of harm if they

continue to work in their present position, or in any capacity with children in a school or college. This includes when someone has:

- behaved in a way that has harmed a child, or may have harmed a child
 - possibly committed a criminal offence against or related to a child
 - behaved towards a child or children in a way that indicates he or she may pose a risk of harm to children
 - behaved or may have behaved in a way that indicates they may not be suitable to work with children.
- Allegations against staff which meet this threshold will be responded to and managed in line with Part four of KCSIE. Allegations that meet the harm threshold will be referred immediately to the headteacher who will contact [the LADO](#) to agree further action to be taken in respect of the child and staff member. In the event of allegations of abuse being made against the headteacher, staff are advised that allegations should be reported to the chair of governors who will contact the LADO.

8.2.2 Concerns that do not meet the 'harm threshold'

- CCGS may also need to take action in response to 'low-level' concerns about staff. Additional information regarding low-level concerns is contained with our low-levels concerns policy – this includes what a low-level concern is, the importance of sharing them and the confidential procedure to follow when sharing them.
- - CCGS has an open and transparent culture in which all concerns about all adults working in or on behalf of the school are dealt with promptly and appropriately; this enables us to identify inappropriate, problematic or concerning behaviour early, minimise the risk of abuse and ensure that adults working in or on behalf of the school are clear about and act within appropriate professional boundaries, and in accordance with our ethos and values.
 - A 'low-level' concern does not mean that it is insignificant; a low-level concern is any concern that an adult working in or on behalf of the school may have acted in a way that is inconsistent with our staff behaviour policy/code of conduct, including inappropriate conduct outside of work and does not meet the 'harm threshold' or is otherwise not serious enough to consider a referral to [the LADO](#).
 - Low-level concerns may arise in several ways and from a number of sources. For example, suspicion, complaints, or allegations made by a child, parent or other adult within or outside of the organisation, or as a result of vetting checks.
- It is crucial that all low-level concerns are shared responsibly, recorded and dealt with appropriately to protect staff from becoming the subject of potential false low-level concerns or misunderstandings.
- Low-level concerns should be shared confidentially in line with our low-level concerns policy/staff behaviour policy/code of conduct with the Headteacher who may wish to consult with another DSL to take a more collaborative decision-making approach.
 - Where low-level concerns are reported to the school, the headteacher will be informed of all low-level concerns and is the ultimate decision maker in respect of the response to all low-level concerns.
 - The headteacher will share concerns and liaise with [the LADO](#) enquiries officer.
 - Low-level concerns shared about supply staff and contractors will be shared with their employers so any potential patterns of inappropriate behaviour can be identified.
 - If the school is in any doubt as to whether the information which has been shared about a member of staff as a low-level concern in fact meets the harm threshold, we will consult with [the LADO](#).

- Low-level concerns will be recorded in writing and reviewed so potential patterns of concerning, problematic or inappropriate behaviour can be identified.
 - Records will be kept confidential and will be held securely and retained and in compliance with the Data Protection Act 2018 and the UK General Data Protection Regulation (UK GDPR) and other relevant policies and procedures (for example data retention policies).
 - Where a pattern is identified, the school will implement appropriate action, for example consulting with [the LADO](#) and following our disciplinary/HR procedures.

Safe Culture

- As part of our approach to safeguarding, the School has created and embedded a culture of openness, trust and transparency in which our values and expected behaviour as set out in our staff behaviour policy/code of conduct are constantly lived, monitored and reinforced by all staff (including supply teachers, volunteers and contractors) and where all concerns are dealt with promptly and appropriately.
- Staff are encouraged and should feel confident to self-refer, if they have found themselves in a situation which could be misinterpreted, might appear compromising to others, and/or on reflection they believe they have behaved in such a way that they consider falls below the expected professional standards. This includes where concerns may be felt to be deliberately invented or malicious; such allegations are extremely rare and as such all concerns should be reported and recorded.
- All staff and volunteers should feel able to raise any concerns about poor or unsafe practice and potential failures in the school safeguarding regime. The leadership team at CCGS will take all concerns or allegations received seriously.
- All members of staff are made aware of the school Whistleblowing procedure, which is available in the staff information folder in Sharepoint. It is a disciplinary offence not to report concerns about the conduct of a colleague that could place a child at risk.
- Staff can access the NSPCC whistleblowing helpline if they do not feel able to raise concerns regarding child protection failures internally. Staff can call 0800 028 0285 (8:00 AM to 8:00 PM Monday to Friday) or email help@nspcc.org.uk.
- CCGS has a legal duty to refer to the Disclosure and Barring Service (DBS) anyone who has harmed, or poses a risk of harm, to a child, or if there is reason to believe the member of staff has committed one of a number of listed offences, and who has been removed from working (paid or unpaid) in regulated activity or would have been removed had they not left. The DBS will consider whether to bar the person.

If these circumstances arise in relation to a member of staff at our school, a referral will be made as soon as possible after the resignation or removal of the individual in accordance with advice from the [LADO](#) and/or the Headteacher.

When in doubt – consult

15. Child on Child Abuse

- All members of staff at CCGS recognise that children are capable of abusing their peers. Child on Child abuse can take many forms, including (but not limited to) bullying, cyberbullying, gender-based abuse, hazing (initiation type violence),

sexually harmful behaviour and violence and 'sexting'. The setting is mindful that some potential issues may be affected by the gender, age, ability and culture of those involved.

- CCGS believes that abuse is abuse and it will never be tolerated, dismissed or minimised. Any incidents of Child on Child abuse will be managed in the same way as any other child protection concern in accordance with Kent Safeguarding Children Board procedures.
- Further information about the school's response to specific allegations can be located in related policies that can be found on the school's website or in the Staff Information folder in Sharepoint:
 - Online Safety and Social Media
 - Positive Behaviour Management
 - Anti-Bullying
 - Data Protection and Information Sharing
 - Image Use
 - Relationship, Sex and Health Education
 - Health and Safety
 - Attendance
 - Risk Assessments (e.g. school trips, use of technology)
 - First Aid and Accidents
 - Managing Allegations Against Staff
 - Staff Behaviour Policy (including Acceptable Use of Technology)
 - Safer Recruitment
 - Whistleblowing
- Any allegations of child-on-child abuse will be recorded, investigated, and dealt with in line with this child protection policy and KCSIE (in particular, part two and five).
- CCGS adopts a zero-tolerance approach to child-on-child abuse. We believe that abuse is abuse and it will never be tolerated or dismissed as "just banter", "just having a laugh", "part of growing up" or "boys being boys"; this can lead to a culture of unacceptable behaviours and can create an unsafe environment for children and a culture that normalises abuse, which can prevent children from coming forward to report it.
- All staff have a role to play in challenging inappropriate behaviours between children. Staff recognise that some child-on-child abuse issues may be affected by gender, age, ability and culture of those involved. For example, for gender-based abuse, girls are more likely to be victims and boys more likely to be perpetrators.
- CCGS recognises that even if there are no reported cases of child-on-child abuse, such abuse is still likely to be taking place and it may be the case that it is just not being reported. As such, it is important that staff speak to the DSL (or deputy) about any concerns regarding child-on-child abuse.
- In order to minimise the risk of child-on-child abuse, the school will use the PHSE/RHSE programme and outside agencies and speakers such as the Police and Talk Consent to educate students about what is and what is not acceptable behaviour, provide dedicated reporting mechanisms for both students and staff (dedicated email addresses and CPOMs)
- We want children to feel able to confidently report abuse and know their concerns will be treated seriously. All allegations of child-on-child abuse will be reported to the DSL and will be recorded, investigated, and dealt with in line with associated school policies,

including child protection, anti-bullying, and positive behaviour management. Students who experience abuse will be offered appropriate support, regardless of where the abuse takes place.

- Concerns about students' behaviour, including child-on-child abuse taking place offsite will be responded to as part of a partnership approach with students' and parents/carers. Offsite behaviour concerns will be recorded and responded to in line with existing appropriate policies, for example anti-bullying, acceptable use, behaviour and child protection policies. **Section 89(5) of the Education and Inspections Act 2006 gives headteachers a statutory power to discipline pupils for poor behaviour outside of the school premises, for example, when children are not under the lawful control or charge of a member of school staff, to such extent as is reasonable.**
- Alleged victims, alleged perpetrators and any other child affected by child-on-child abuse will be supported by:
 - Taking reports seriously, listening carefully, avoiding victim blaming, providing appropriate pastoral support, working with parents/carers, following procedures as identified in other policies, for example, the school/college anti-bullying, behaviour and where necessary and appropriate, informing the police and/or ICS

Child-on-child sexual violence and sexual harassment

- When responding to concerns relating to child-on-child sexual violence or harassment, CCGS will follow the guidance outlined in Part five of KCSIE.
- CCGS recognises that sexual violence and sexual abuse can happen anywhere, and all staff will maintain an attitude of 'it could happen here.' CCGS recognises sexual violence and sexual harassment can occur between two children of any age and sex. It can occur through a group of children sexually assaulting or sexually harassing a single child or group of children and can occur online and face to face (both physically and verbally). Sexual violence and sexual harassment is never acceptable.
- **All** victims of sexual violence or sexual harassment will be reassured that they are being taken seriously, regardless of how long it has taken them to come forward, and that they will be supported and kept safe. A victim will never be given the impression that they are creating a problem by reporting sexual violence or sexual harassment, or ever be made to feel ashamed for making a report.
- Abuse that occurs online or outside of the school will not be dismissed or downplayed and will be treated equally seriously and in line with relevant policies/procedures, for example anti-bullying, positive behaviour management, child protection, online safety.
- CCGS recognises that the law is in place to protect children and young people rather than criminalise them, and this will be explained in such a way to students that avoids alarming or distressing them.
- CCGS recognises that an initial disclosure to a trusted adult may only be the first incident reported, rather than representative of a singular incident and that trauma can impact memory, so children may not be able to recall all details or timeline of abuse. All staff will be aware certain children may face additional barriers to telling someone, for example because of their vulnerability, disability, sex, ethnicity, and/or sexual orientation.
- The DSL (or deputy) is likely to have a complete safeguarding picture and will be the most appropriate person to advise on the initial response.
 - The DSL will make an immediate risk and needs assessment which will be considered on a case-by-case basis which explores how best to support and

- protect the victim and the alleged perpetrator, and any other children involved/impacted, in line with part five of KCSIE and relevant local/national guidance and support, for example [KSCMP](#) procedures.
 - The risk and needs assessment will be recorded and kept under review and will consider the victim (especially their protection and support), the alleged perpetrator, and all other children, and staff and any actions that are required to protect them.
 - Any concerns involving an online element will take place in accordance with relevant local/national guidance and advice.
- Reports will initially be managed internally by the school and where necessary will be referred to [Integrated Children's Services](#) (Early Help and/or Children's Social Work Service) via the Children's Portal and/or the police. Important considerations which may influence this decision include:
 - the wishes of the victim in terms of how they want to proceed.
 - the nature of the alleged incident(s), including whether a crime may have been committed and/or whether Harmful Sexual Behavior has been displayed.
 - the ages of the children involved.
 - the developmental stages of the children involved.
 - any power imbalance between the children.
 - if the alleged incident is a one-off or a sustained pattern of abuse - sexual abuse can be accompanied by other forms of abuse and a sustained pattern may not just be of a sexual nature.
 - that sexual violence and sexual harassment can take place within intimate personal relationships between children.
 - understanding intra familial harms and any necessary support for siblings following incidents.
 - whether there are any ongoing risks to the victim, other children, or school staff.
 - any other related issues and wider context, including any links to child sexual exploitation and child criminal exploitation.
- The school will in most instances engage with both the victim's and alleged perpetrator's parents/carers when there has been a report of sexual violence; this might not be necessary or proportionate in the case of sexual harassment and will depend on a case-by-case basis. The exception to this is if there is a reason to believe informing a parent/carer will put a child at additional risk. Any information shared with parents/carers will be in line with information sharing expectations, our confidentiality policy, and any data protection requirements, and where they are involved, will be subject to discussion with other agencies (for example Children's Social Work Service and/or the police) to ensure a consistent approach is taken.
- If at any stage the DSL is unsure if a request for support is appropriate, advice may be sought from the Front Door Service.

Nude and/or semi-nude image sharing by children

The term 'sharing nudes and semi-nudes' is used to mean the sending or posting of nude or semi-nude images, videos or live streams of/by young people under the age of eighteen. Creating and sharing nudes and semi-nudes of under-18s (including those created and shared with consent) is illegal which makes responding to incidents complex. The [UKCIS Sharing nudes and semi-nudes: advice for education settings working with children and young people' guidance](#) outlines how schools and colleges should respond to all incidents of consensual and non-consensual image sharing; it should be read and understood by all DSLs working with all age groups

- CCGS recognises that consensual and non-consensual sharing of nudes and semi-nude images and/or videos (also known as youth produced/involved sexual imagery or “sexting”) can be a safeguarding issue; all concerns will be reported to and dealt with by the DSL (or deputy).
- When made aware of concerns involving consensual and non-consensual sharing of nudes and semi-nude images and/or videos by children, staff are advised:
 - to report any concerns to the DSL immediately.
 - never to view, copy, print, share, forward, store or save the imagery, or ask a child to share or download it – this may be illegal. If staff have already inadvertently viewed imagery, this will be immediately reported to the DSL.
 - not to delete the imagery or ask the child to delete it.
 - to avoid saying or doing anything to blame or shame any children involved.
 - to reassure the child(ren) involved and explain that the DSL will be informed so they can receive appropriate support and help. Do not promise confidentiality, as other agencies may need to be informed and be involved.
 - not to investigate or ask the child(ren) involved to disclose information regarding the imagery
 - to not share information about the incident with other members of staff, children/young people, or parents/carers, including the families and child(ren) involved in the incident; this is the responsibility of the DSL.
- DSLs will respond to concerns in line with the non-statutory UKCIS guidance: ‘[Sharing nudes and semi-nudes: advice for education settings working with children and young people](#)’ and the local [KSCMP](#) guidance. When made aware of a concern involving consensual and non-consensual sharing of nudes and semi-nude images and/or videos:
 - The DSL will hold an initial review meeting to explore the context and ensure appropriate and proportionate safeguarding action is taken in the best interests of any child involved. This may mean speaking with relevant staff and the children involved as appropriate.
 - Parents/carers will be informed at an early stage and be involved in the process to best support children, unless there is good reason to believe that involving them would put a child at risk of harm.
 - All decisions and action taken will be recorded in line with our child protection procedures.
 - A referral will be made to ICS via the Children’s Portal and/or the police immediately if:
 - the incident involves an adult (over 18).
 - there is reason to believe that a child has been coerced, blackmailed, or groomed, or there are concerns about their capacity to consent, for example, age of the child or they have special educational needs.
 - the image/videos involve sexual acts and a child under the age of thirteen, depict sexual acts which are unusual for the child’s developmental stage, or are violent.
 - a child is at immediate risk of harm owing to the sharing of nudes and semi-nudes.
 - The DSL may choose to involve other agencies at any time if further information/concerns are disclosed at a later date.
 - If DSLs are unsure if a request for support is appropriate, advice may be sought from the Front Door Service.

Child Sexual Exploitation (CSE) and Child Criminal Exploitation (CCE)

- CCGS recognises that both CSE and CCE are forms of abuse that occur where an individual or group takes advantage of an imbalance in power to coerce, manipulate or deceive a child into taking part in sexual or criminal activity, in exchange for something

the victim needs or wants, and/or for the financial advantage or increased status of the perpetrator or facilitator and/or through violence or the threat of violence. CSE and CCE can affect children, both male and female and can include children who have been moved (commonly referred to as trafficking) for the purpose of exploitation.

- CCGS recognises that children can become trapped in CCE as perpetrators can threaten victims and their families with violence or entrap and coerce them into debt. Children involved in criminal exploitation often commit crimes themselves which can mean their vulnerability as victims is not always recognised (particularly older children) and they are not treated as victims, despite the harm they have experienced. The experience of girls who are criminally exploited can also be very different to that of boys. We also recognise that boys and girls being criminally exploited may be at higher risk of child sexual exploitation (CSE).
- CCGS recognises that CSE can occur over time or be a one-off occurrence and may happen without the child's immediate knowledge, for example through others sharing videos or images of them on social media. CSE can affect any child who has been coerced into engaging in sexual activities and includes 16- and 17-year-olds who can legally consent to have sex. Some children may not realise they are being exploited, for example they may believe they are in a genuine romantic relationship.
- If staff are concerned that a child may be at risk of CSE or CCE, immediate action should be taken by speaking to the DSL or a deputy.

Serious violence

- All staff are aware of the indicators which may signal children are at risk from or are involved with serious violent crime. These may include unexplained gifts or new possessions, increased absence from school, a change in friendships or relationships with older individuals or groups, a significant decline in performance, signs of self-harm or a significant change in wellbeing, or signs of assault or unexplained injuries. Unexplained gifts or new possessions could also indicate that children have been approached by, or are involved with, individuals associated with criminal networks or gangs and may be at risk of CCE.
- Any concerns regarding serious violence will be reported and responded to in line with other child protection concerns by speaking with a DSL or deputy. The initial response to child victims is important and staff will take any allegations seriously and work in ways that support children and keep them safe.

Modern Slavery

- Modern slavery encompasses human trafficking and slavery, servitude and forced or compulsory labour. Exploitation can take many forms, including sexual exploitation, forced labour, slavery, servitude, forced criminality and the removal of organs. Further information on the signs that someone may be a victim of modern slavery, the support available to victims and how to refer them to the NRM is available in the Statutory Guidance: [Modern slavery: how to identify and support victims](#).
- If there are concerns that any member of the community is a victim or involved with modern slavery, concerns should be shared with a DSL or deputy and will be responded to in line with this policy.

So-called Honour Based Abuse (HBA)

- So-called 'honour'-based abuse (HBA) encompasses incidents or crimes which have been committed to protect or defend the honour of the family and/or the community, including female genital mutilation (FGM), forced marriage, and practices such as breast ironing.
- All forms of HBA are abuse, regardless of the motivation, and concerns will be responded to in line with section 3 of this policy. Staff will report any concerns about HBA to the DSL (or a deputy). If there is an immediate threat, the police will be contacted.
- All staff will speak to the DSL (or deputy) if they have any concerns about forced marriage. Staff can also contact the Forced Marriage Unit if they need advice or information: 020 7008 0151 or fmf@fcdof.gov.uk
- Whilst all staff will speak to the DSL (or deputy) if they have any concerns about FGM, there is a specific legal reporting duty on teachers.
 - Section 5B of the Female Genital Mutilation Act 2003 (as inserted by section 74 of the Serious Crime Act 2015) places a statutory duty upon teachers in England and Wales, to personally report to the police where they discover that FGM appears to have been carried out on a girl.
 - It will be rare for teachers to see visual evidence, and they should not be examining students, however teachers who do not personally report such concerns may face disciplinary sanctions. Further information on when and how to make a report can be found at: [Mandatory reporting of female genital mutilation procedural information](#) and [FGM Mandatory reporting Duty Fact Sheet](#).
 - Unless the teacher has good reason not to, they are expected to also discuss any FGM concerns with the DSL (or a deputy), and Kent Integrated Childrens Services should be informed as appropriate.
 -

Preventing radicalisation

Note: This preventing radicalisation section remains under review, following the publication of a [new definition of extremism](#) on the 14 March 2024

DSLs and leaders should access and be aware of the DfE [The Prevent duty: safeguarding learners vulnerable to radicalisation - GOV.UK \(www.gov.uk\)](#)

- CCGS recognises that children may be susceptible to radicalisation into terrorism.
- CCGS is aware of our duty under section 26 of the Counter-Terrorism and Security Act 2015 (the CTSA 2015), to have “due regard to the need to prevent people from being drawn into terrorism”, also known as the Prevent duty and the [specific obligations](#) placed upon us as an education provider regarding risk assessments, working in partnership, staff training, and IT policies.
- All staff have received appropriate Prevent training to enable them to be alert to changes in children’s behaviour which could [indicate that they may need help or protection from radicalisation](#).
- Staff will be supported to use their judgement in identifying children who might be at risk of radicalisation and will act proportionately; staff will report concerns to the DSL (or a deputy DSL), who, where appropriate, will follow the [local procedures](#) in regard to making a Prevent referral. If there is an immediate threat to safety, the police will be contacted via 999.

Cybercrime

- CCGS recognises that children with particular skills and interests in computing and technology may inadvertently or deliberately stray into 'cyber-enabled' (crimes that can happen offline but are enabled at scale and at speed online) or 'cyber dependent' (crimes that can be committed only by using a computer/internet enabled device) cybercrime.
- If staff are concerned that a child may be at risk of becoming involved in cyber-dependent cybercrime, the DSL or a deputy DSL will be informed, and consideration will be given to accessing local support and/or referring into the [Cyber Choices](#) programme, which aims to intervene when young people are at risk of committing, or being drawn into, low level cyber-dependent offences and divert them to a more positive use of their skills and interests.
- Where there are concerns about 'cyber-enabled' crime such as fraud, purchasing of illegal drugs online, child sexual abuse and exploitation, or other areas of concern such as online bullying or general online safety, they will be responded to in line with the child protection policy and other appropriate policies.

Kent DSLs may also seek advice from Kent Police and/or the Front Door Service

Domestic abuse

- CCGS recognises that:
 - domestic abuse can encompass a wide range of behaviours and may be a single incident or a pattern of incidents.
 - domestic abuse can include, but is not limited to, psychological (including coercive control), physical, sexual, economic, or emotional abuse.
 - children can be victims of domestic abuse if they see, hear, or experience the effects of abuse at home and/or suffer domestic abuse in their own intimate relationships (teenage relationship abuse).
 - anyone can be a victim of domestic abuse, regardless of sexual identity, age, ethnicity, socio-economic status, sexuality or background, and domestic abuse can take place inside or outside of the home.
 - domestic abuse can take place within different types of relationships, including ex-partners and family members.
 - there is always a potential for domestic abuse to take place when parents/families separate, or for existing domestic abuse to persist or escalate post separation.
 - domestic abuse can have a detrimental and long-term impact on children's health, well-being, development, and ability to learn.
 - domestic abuse concerns will not be looked at in isolation and our response will be considered as part of a holistic approach which takes into account children's lived experiences.
 - it is important not to use victim blaming language and to adopt a trauma informed approach when responding to concerns relating to domestic abuse.
- If staff are concerned that a child may be at risk of seeing, hearing, or experiencing the effects of any form of domestic abuse, or in their own intimate relationships, immediate action should be taken by speaking to the DSL or a deputy.
- CCGS is an [Operation Encompass School](#). This means we work in partnership with Kent Police to provide support to children experiencing the effects of domestic abuse. An Operation Encompass notification is sent to the school when the police are called to an

incident of domestic abuse and there are children in the household; the police are expected to inform schools before the child(ren) arrive the following day.

- Operation Encompass notifications help ensure that we have up to date and relevant information about children's circumstances and enables us to put immediate support in place according to the child's needs.
- Operation Encompass does not replace statutory safeguarding procedures and where appropriate, a referral to the Front Door Service will be made if there are any concerns about a child's welfare.
- Where the school is unsure of how to respond to a notification, advice may be sought from the Front Door Service, or the Operation Encompass helpline which is available 8AM to 1PM, Monday to Friday on 0204 513 9990.

Operation Encompass provides an advice and helpline service for all staff members from educational settings who may be concerned about children who have experienced domestic abuse. The helpline is available 8AM to 1PM, Monday to Friday on 0204 513 9990

Mental health

- All staff recognise that mental health problems can, in some cases, be an indicator that a child has suffered or is at risk of suffering abuse, neglect or exploitation.
- Staff are aware that children's experiences, for example where children have suffered abuse and neglect, or other potentially traumatic Adverse Childhood Experiences (ACEs), can impact on their mental health, behaviour, and education.
- Staff are well placed to observe children day-to-day and identify those whose behaviour suggests that they may be experiencing a mental health problem or be at risk of developing one.
- If staff have a mental health concern about a child that is also a safeguarding concern, immediate action should be taken by speaking to the DSL or a deputy.

16. Safeguarding Children at greater risk of harm

Special Educational Needs and Disabilities

- Chatham & Clarendon Grammar School acknowledges that children with special educational needs (SEN) and disabilities can face additional safeguarding challenges as they may have an impaired capacity to resist or avoid abuse.
- Chatham & Clarendon Grammar School will ensure that children with SEN and disabilities, specifically those with communication difficulties will be supported to ensure that their voice is heard and acted upon.
- Members of staff are encouraged to be aware that children with SEN and disabilities can be disproportionately impacted by safeguarding concerns such as bullying. All members of staff will be encouraged to appropriately explore possible indicators of abuse such as behaviour/mood change or injuries and not to assume that they are related to the child's disability and be aware that children with SEN and disabilities may not always outwardly display indicators of abuse.

Children requiring mental health support

- School has an important role to play in supporting the mental health and wellbeing of our students. Mental health problems can, in some cases, be an indicator that a child has suffered or is at risk of suffering abuse, neglect or exploitation.
- Where there are concerns regarding possible mental health problems for students, staff should:
 - Provide information regarding any specific systems and processes in place for identifying possible mental health problems, and encouraging staff to use CPOMs to record their concerns
- Age appropriate education will be provided to our students to help promote positive health, wellbeing, and resilience. (Delivered through the PHSE/RHSE curriculum and outside agencies/speakers)

Children who are absent from education

- Children being absent from education for prolonged periods and/or on repeat occasions can act as a vital warning sign to a range of safeguarding issues including neglect, child sexual and child criminal exploitation - particularly county lines.
- A robust response to children who are absent from education for prolonged periods and/or on repeat occasions will support the identification of such abuse and may help prevent the risk of children going missing in the future. This includes when problems are first emerging and also where children are already known to Kent Integrated Childrens Services and/or have a social worker (such as a child who is a child in need or who has a child protection plan, or is a looked after child), where being absent from education may increase known safeguarding risks within the family or in the community.
- Where possible, the school will hold more than one emergency contact number for each student, so we have additional options to make contact with a responsible adult if a child missing education is also identified as a welfare and/or safeguarding concern.
- Where the school/college have concerns that a child has unexplainable and/or persistent absences from education and/or is missing from education, we will respond in line with our statutory duties (DfE: [Children missing education](#)) and local policies. Local support is available via the Kent [PRU, Inclusion and Attendance Service \(PIAS\)](#).

Elective Home Education (EHE)

- Where a parent/carers expresses their intention to remove a child from school with a view to educating at home, we will respond in line with [national Elective Home Education guidance](#) and local [Kent guidance](#).
- We will work together with parents/carers and other key professionals and organisations to ensure decisions are made in the best interest of the child.

Children who may benefit from Early Help

- Any child may benefit from early help, but all staff should be particularly alert to the potential need for early help for a child who:
 - is disabled or has certain health conditions and has specific additional needs

- has special educational needs (whether or not they have a statutory Education, Health and Care plan)
 - has a mental health need
 - is a young carer
 - is showing signs of being drawn in to anti-social or criminal behaviour, including gang involvement and association with organised crime groups or county lines
 - is frequently missing/goes missing from education, home or care,
 - has experienced multiple suspensions, is at risk of being permanently excluded from schools, colleges and in Alternative Provision or a Pupil Referral Unit.
 - is at risk of modern slavery, trafficking, sexual and/or criminal exploitation
 - is at risk of being radicalised or exploited
 - has a parent or carer in custody, or is affected by parental offending
 - is in a family circumstance presenting challenges for the child, such as drug and alcohol misuse, adult mental health issues and domestic abuse
 - is misusing alcohol and other drugs themselves
 - is at risk of so-called 'honour'-based abuse such as Female Genital Mutilation or Forced Marriage
 - is a privately fostered child.
- Where it is identified a child may need early help, staff and DSLs will respond in line with school Child Protection Procedures.

Children who need a social worker (child in need and child protection plans)

- The DSL or Deputy DSL's will hold details of social workers working with children in the school so that decisions can be made in the best interests of the child's safety, welfare, and educational outcomes.
- Where children have a social worker, this will inform school decisions about their safety and promoting their welfare, for example, responding to unauthorised absence and provision of pastoral and/or academic support.

Looked after children, previously looked after children and care leavers

- CCGS recognises the common reason for children becoming looked after is as a result of abuse, neglect and/or exploitation, and a previously looked after child also potentially remains vulnerable.
- The Senior Tutors works with local authorities, including the [Virtual School Kent \(including the virtual school head\)](#), to promote the educational achievement of registered pupils who are looked after or who have been previously looked after.
- The Senior Tutors who are also DSL's will work to ensure appropriate staff have the information they need in relation to a child's looked after legal status, contact arrangements with birth parents or those with parental responsibility, care arrangements and the levels of authority delegated to the carer by the authority looking after them.
- Where a child is looked after, the DSL will hold details of the social worker and the name of the virtual school head in the authority that looks after the child.
- Where the school believe a child is being cared for as part of a private fostering arrangement (occurs when a child under 16 or 18 if the child is disabled is cared for and lives with an adult who is not a relative for 28 days or more) there is a duty to recognise these arrangements and inform the Local Authority via the Front Door.

- Where a child is leaving care, the DSL will hold details of the local authority Personal Advisor appointed to guide and support them and will liaise with them as necessary regarding any issues of concern.

Children who are Lesbian, Gay, Bisexual, or Gender Questioning/Trans (LGBT)

Additional support for education settings regarding equality, diversity and inclusion is available via the [Education People EDIT team](#)

- The fact that a child or a young person may be LGBT is not in itself an inherent risk factor for harm, however, CCGS recognises that children who are LGBT or are perceived by other children to be LGBT (whether they are or not) can be targeted by other children or others within the wider community.
- When supporting a trans or gender questioning child, the school/colleges will consider the broad range of their individual needs, in partnership with the child's parents (other than in the exceptionally rare circumstances where involving parents would constitute a significant risk of harm to the child), including any clinical advice that is available and how to address wider vulnerabilities such as the risk of bullying. **Schools should refer to KCC Guidance for Schools and Colleges in relation to Gender Questioning Children, when deciding how to proceed**
- CCGS recognises risks can be compounded where children who are LGBT lack a trusted adult with whom they can be open. LGBT education is included within our Relationship and Sex Education and Health Education curriculum, and our staff will endeavour to reduce the additional barriers faced and provide a safe space that facilitates a culture where children can speak out or share any concerns.

Children who are privately fostered

- [Private fostering](#) occurs when a child under the age of 16 (under 18 for children with a disability) is provided with care and accommodation by a person who is not a parent, person with parental responsibility for them or a relative in their own home. A child is not privately fostered if the person caring for and accommodating them has done so for less than 28 days and does not intend to do so for longer. Such arrangements may come to the attention of our staff through the normal course of their interaction, and promotion of learning activities, with children.
- Where private fostering arrangements come to the attention of the school, we must notify Kent Integrated Children's Services in line with the local [KSCMP arrangements](#) in order to allow the local authority to check the arrangement is suitable and safe for the child.

17. Online Safety

- It is recognised by CCGS that the use of technology presents challenges and risks to children and adults both inside and outside of school.
- The DSL has overall responsibility for online safeguarding within the school.
- CCGS identifies that the issues can be broadly categorised into four areas of risk:
 - **content:** being exposed to illegal, inappropriate or harmful material
 - **contact:** being subjected to harmful online interaction with other users
 - **conduct:** personal online behaviour that increases the likelihood of, or causes, harm.

- **commerce** risks such as online gambling, inappropriate advertising, phishing or financial scams
- The DSL and leadership team have read annex C regarding Online Safety within 'Keeping Children Safe in Education' 2024.
- CCGS recognises the specific risks that can be posed by mobile phones and cameras and in accordance with KCSIE 2024 and has appropriate policies in place that are shared and understood by all members of the school community. Further information regarding the specific approaches relating to this can be found in the schools **E-Safety Policy** which can be found on the school's website or in the Staff information folder in Sharepoint.
- CCGS will ensure that appropriate filtering and monitoring systems are in place when pupils and staff access school systems and internet provision.
- CCGS acknowledges that whilst filtering and monitoring is an important part of school's online safety responsibilities, it is only one part of our approach to online safety. Pupils and adults may have access to systems external to the school control such as mobile phones and other internet enabled devices and technology and where concerns are identified appropriate action will be taken.
- CCGS will ensure a comprehensive whole school curriculum response is in place to enable all pupils to learn about and manage online risks effectively and will support parents and the wider school community (including all members of staff) to become aware and alert to the need to keep children safe online.
- CCGS recognises that generative artificial intelligence (AI) tools may have many uses which could benefit our school community. However, it is important to recognise that AI tools can also pose risks; this is including, but not limited to, bullying and harassment, abuse and exploitation (including child sexual abuse), privacy and data protection risks, plagiarism and cheating, and inaccurate, harmful and/or biased material, and additionally its use can pose moral, ethical and legal concerns.
 - Staff and students will be made aware of the benefits and risks of using AI tools; **list how this will be achieved, for example through specific lessons, staff training etc.**
 - Staff are required to carry out a risk assessment and seek written approval from the senior leadership team prior to any use of AI in school.
 - CCGS will respond to any misuse of AI in line with relevant policies, including but not limited to, anti-bullying, positive behaviour management and child protection, acceptable use policy.
 - Where the School believe that AI tools may have facilitated the creation of child sexual abuse material, including the sharing of nude/semi-nude images by children, the school will respond in line with the UKCIS guidance '[Sharing nudes and semi-nudes: advice for education settings working with children and young people](#)' and the local [KSCMP](#) guidance.
- CCGS recognises the specific risks that can be posed by mobile and smart technology, including mobile/smart phones, cameras, wearable technology and any other electronic devices with imaging and/or sharing capabilities. In accordance with KCSIE:

CCGS has appropriate mobile and smart technology and image use policies in place, which are shared and understood by all members of the community. The school also has a no mobile phone policy for students during the school day.

Appropriate filtering and monitoring on school/college devices and networks

- As a school we will do all we reasonably can to limit children's exposure to online harms through school provided devices and networks and in line with the requirements of the Prevent Duty and KCSIE, we will ensure that appropriate filtering and monitoring systems are in place.
- When implementing appropriate filtering and monitoring we will ensure that "over blocking" does not lead to unreasonable restrictions as to what children can be taught with regards to online teaching and safeguarding.
- Whilst filtering and monitoring is an important part of our online safety responsibilities, it is only one part of our approach to online safety and we recognise that we cannot rely on filtering and monitoring alone to safeguard our students; effective safeguarding practice, robust policies, appropriate classroom/behaviour management and regular education/training about safe and responsible use is essential and expected.
 - students will use appropriate search tools, apps and online resources as identified by staff, following an informed risk assessment.
 - Internet use will be supervised by staff as appropriate to students age, ability and potential risk of harm:

18. Curriculum and Staying Safe

- We recognise that schools play an essential role in helping children to understand and identify the parameters of what is appropriate child and adult behaviour; what is 'safe'; to recognise when they and others close to them are not safe; and how to seek advice and support when they are concerned.
- Our curriculum provides opportunities for increasing self-awareness, self-esteem, social and emotional understanding, assertiveness and decision making so that students have a range of contacts and strategies to ensure their own protection and that of others. Online safety is integrated into the curriculum.
- Our school systems support children to talk to a range of staff. Children will be listened to and heard and their concerns will be taken seriously and acted upon as appropriate.

19. The Use of School Premises by Other Organisations

- Where services or activities are provided separately by another body using the school premises, the Head Teacher and Governing Body will seek written assurance that the organisation concerned has appropriate policies and procedures in place with regard to safeguarding children and child protection and that relevant safeguarding checks have been made in respect of staff and volunteers.
- If this assurance is not achieved then an application to use premises will be refused.

20. Security

- All members of staff have a responsibility for maintaining awareness of buildings and grounds security and for reporting concerns that may come to light.
- Appropriate checks will be undertaken in respect of visitors and volunteers coming into school as outlined within guidance. Visitors will be expected to sign in and out via the InVentry system (tap in, tap out) or the office visitors log (if Inventory is not working) and to display a visitor's badge and a lanyard which identifies their DBS

status whilst on school site. Any individual who is not known or identifiable should be challenged for clarification and reassurance.

- The school will not accept the behaviour of any individual (parent or other) that threatens school security or leads others (child or adult) to feel unsafe. Such behaviour will be treated as a serious concern and may result in a decision to refuse access for that individual to the school site.

21. Monitoring and Review

- All school staff (including temporary staff and volunteers) will have access to a copy of this policy. The policy will also be available to parents/carers.
- The policy will be reviewed annually.

22. Local Support

- All members of staff at CCGS are made aware of local support available.
 - **Kent Integrated Children's Services/ Children's Social Work Services**
 - [Kent Integrated Children's Services Portal](#) – select 'urgent' if there is an immediate risk/concern
 - Front Door Service: 03000 411111
 - Out of Hours Number: 03000 419191
 - **Local Early Help and Preventative Services and Family Hubs**
 - School Website Wellbeing Page has links to lots of local agencies
 - [Early Help and Preventative Services - KELSI](#)
 - [Early Help contacts - KELSI](#)
 - [Kent Family Hubs - Kent County Council](#)
 - **Kent Police**
 - 101 or 999 if there is an immediate risk of harm
 - Leigh Cleaver – Child Centred Policing Unit. 07989239506
 - **Kent Safeguarding Children Multi-Agency Partnership (KSCMP)**
 - www.kscmp.org.uk
 - 03000 421126 or kscmp@kent.gov.uk
 - **Adult Safeguarding**
 - Adult Social Care via 03000 41 61 61 (text relay 18001 03000 41 61 61) or email social.services@kent.gov.uk
 - **Kent LADO Education Safeguarding Advisory Service (LESAS) – Support for Kent Children's Workforce**
 - [Local Authority Designated Officer \(LADO\) - Kent Safeguarding Children Multi-Agency Partnership](#)
 - To speak to the LADO regarding an allegation against a member of staff, complete a referral on the [Kent Integrated Children's Services Portal](#).
 - To raise a LADO, strategic education safeguarding or online safety enquiry, commission a review or enquiry about bespoke training or other safeguarding products, please use the [LESAS enquiry form](#).

Appendix 1: Categories of Abuse

All staff should be aware that abuse, neglect, exploitation and other safeguarding issues are rarely standalone events that can be covered by one definition or label. In most cases multiple issues will overlap with one another.

Abuse: a form of maltreatment of a child. Somebody may abuse or neglect a child by inflicting harm, or by failing to act to prevent harm. They may be abused by an adult or adults or another child or children. It should be noted that abuse can be carried out both on and offline and be perpetrated by men, women, and children.

Sexual abuse: involves forcing or enticing a child or young person to take part in sexual activities, not necessarily involving a high level of violence, whether or not the child is aware of what is happening. The activities may involve physical contact, including assault by penetration (for example rape or oral sex) or non-penetrative acts such as masturbation, kissing, rubbing, and touching outside of clothing. They may also include non-contact activities, such as involving children in looking at, or in the production of, sexual images, watching sexual activities, encouraging children to behave in sexually inappropriate ways, or grooming a child in preparation for abuse (including via the internet). Sexual abuse is not solely perpetrated by adult males. Women can also commit acts of sexual abuse, as can other children.

Signs that MAY INDICATE Sexual Abuse

- Sudden changes in behaviour and performance
- Displays of affection which are sexual and age inappropriate
- Self-harm, self-mutilation or attempts at suicide
- Alluding to secrets which they cannot reveal
- Tendency to cling or need constant reassurance
- Regression to younger behaviour, for example thumb sucking, playing with discarded toys, acting like a baby
- Distrust of familiar adults, for example, anxiety of being left with relatives, a childminder or lodger
- Unexplained gifts or money
- Depression and withdrawal
- Fear of undressing, for example for PE
- Secrecy relating to use of technology
- Sexually transmitted disease or pregnancy
- Fire setting

Physical abuse: a form of abuse which may involve hitting, shaking, throwing, poisoning, burning, or scalding, drowning, suffocating or otherwise causing physical harm to a child. Physical harm may also be caused when a parent or carer fabricates the symptoms of, or deliberately induces, illness in a child.

Signs that MAY INDICATE physical abuse

- Bruises and abrasions around the face
- Damage or injury around the mouth
- Bi-lateral injuries, such as two bruised eyes
- Bruising to soft area of the face such as the cheeks
- Fingertip bruising to the front or back of torso
- Bite marks
- Burns or scalds (unusual patterns and spread of injuries)
- Deep contact burns, such as cigarette burns
- Injuries suggesting beatings (strap marks, welts)
- Covering arms and legs even when hot

- Inappropriate/harmful medication usage
- Aggressive behaviour or severe temper outbursts.
- Injuries that cannot be accounted for. Inadequate, inconsistent, or excessively plausible explanations for an injury, or a delay in seeking treatment should signal concern.

Emotional abuse: the persistent emotional maltreatment of a child such as to cause severe and adverse effects on the child's emotional development. It may involve conveying to a child that they are worthless or unloved, inadequate, or valued only insofar as they meet the needs of another person. It may include not giving the child opportunities to express their views, deliberately silencing them or 'making fun' of what they say or how they communicate. It may feature age or developmentally inappropriate expectations being imposed on children. These may include interactions that are beyond a child's developmental capability as well as overprotection and limitation of exploration and learning or preventing the child participating in normal social interaction. It may involve seeing or hearing the ill-treatment of another. It may involve serious bullying (including cyberbullying), causing children frequently to feel frightened or in danger, or the exploitation or corruption of children. Some level of emotional abuse is involved in all types of maltreatment of a child, although it may occur alone.

Signs that MAY INDICATE emotional abuse

- Over reaction to mistakes
- Lack of self-confidence/esteem
- Sudden speech disorders
- Self-harming
- Eating Disorders
- Extremes of passivity and/or aggression
- Compulsive stealing
- Drug, alcohol, solvent abuse
- Fear of parents being contacted
- Unwillingness or inability to play
- Secrecy relating to use of technology
- Excessive need for approval, attention, and affection

Neglect: the persistent failure to meet a child's basic physical and/or psychological needs, likely to result in the serious impairment of the child's health or development. Neglect may occur during pregnancy as a result of maternal substance abuse. Once a child is born, neglect may involve a parent or carer failing to: provide adequate food, clothing, and shelter (including exclusion from home or abandonment); protect a child from physical and emotional harm or danger; ensure adequate supervision (including the use of inadequate care-givers); or ensure access to appropriate medical care or treatment. It may also include neglect of, or unresponsiveness to, a child's basic emotional needs.

Signs that MAY INDICATE neglect.

- Constant hunger
- Poor personal hygiene
- Constant tiredness
- Inadequate clothing
- Frequent lateness or non-attendance
- Untreated medical problems
- Poor relationship with peers
- Compulsive stealing and scavenging
- Rocking, hair twisting and thumb sucking
- Running away
- Loss of weight or being constantly underweight
- Low self esteem

Appendix 2: National Support Organisations

additional links can also be found in Part two and Annex B KCSIE

NSPCC 'Report Abuse in Education' Helpline

- [0800 136 663](tel:0800136663) or help@nspcc.org.uk

National Organisations

- NSPCC: www.nspcc.org.uk
- Barnardo's: www.barnardos.org.uk
- Action for Children: www.actionforchildren.org.uk
- Children's Society: www.childrenssociety.org.uk
- Centre of Expertise on Child Sexual Abuse: www.csacentre.org.uk

Support for Staff

- Education Support Partnership: www.educationsupportpartnership.org.uk
- Professional Online Safety Helpline: www.saferinternet.org.uk/helpline
- Harmful Sexual Behaviour Support Service: <https://swgfl.org.uk/harmful-sexual-behaviour-support-service>

Support for pupils/students

- ChildLine: www.childline.org.uk
- Papyrus: www.papyrus-uk.org
- The Mix: www.themix.org.uk
- Shout: www.giveusashout.org
- Fearless: www.fearless.org
- Victim Support: www.victimsupport.org.uk

Support for Adults

- Family Lives: www.familylives.org.uk
- Crime Stoppers: www.crimestoppers-uk.org
- Victim Support: www.victimsupport.org.uk
- The Samaritans: www.samaritans.org
- NAPAC (National Association for People Abused in Childhood): www.napac.org.uk
- MOSAC: www.mosac.org.uk
- Action Fraud: www.actionfraud.police.uk
- Shout: www.giveusashout.org
- Advice now: www.advicenow.org.uk

Support for Learning Disabilities

- Respond: www.respond.org.uk
- Mencap: www.mencap.org.uk
- Council for Disabled Children: <https://councilfordisabledchildren.org.uk/>

Contextual Safeguarding Network

- <https://contextualsafeguarding.org.uk/>

Kent Resilience Hub

- <https://kentresiliencehub.org.uk/>

Children with Family Members in Prison

- National information Centre on Children of Offenders (NICCO): www.nicco.org.uk/

Substance Misuse

- We are with you (formerly Addaction): www.wearewithyou.org.uk/services/kent-for-young-people/
- Talk to Frank: www.talktofrank.com

Domestic Abuse

- Domestic abuse services: www.domesticabuseservices.org.uk
- Refuge: www.refuge.org.uk
- Women's Aid: www.womensaid.org.uk
- Men's Advice Line: www.mensadvice.org.uk
- Mankind: www.mankindcounselling.org.uk
- National Domestic Abuse Helpline: www.nationaldahelpline.org.uk
- Respect Phoneline: <https://respectphoneline.org.uk>

Criminal and Sexual Exploitation

- National Crime Agency: www.nationalcrimeagency.gov.uk/who-we-are
- It's not okay: www.itsnotokay.co.uk
- NWG Network: www.nwgnetwork.org
- County Lines Toolkit for Professionals: www.childrenssociety.org.uk/information/professionals/resources/county-lines-toolkit
- Multi-agency practice principles for responding to child exploitation and extra-familial harm: <https://tce.researchinpractice.org.uk/>

Honour Based Abuse

- Karma Nirvana: <https://karmanirvana.org.uk>
- Forced Marriage Unit: www.gov.uk/guidance/forced-marriage
- FGM Factsheet: https://assets.publishing.service.gov.uk/government/uploads/system/uploads/attachment_data/file/496415/6_1639_HO_SP_FGM_mandatory_reporting_Fact_sheet_Web.pdf
- Mandatory reporting of female genital mutilation: procedural information: www.gov.uk/government/publications/mandatory-reporting-of-female-genital-mutilation-procedural-information
- The right to choose - government guidance on forced marriage: www.gov.uk/government/publications/the-right-to-choose-government-guidance-on-forced-marriage

Radicalisation and hate

- Educate against Hate: www.educateagainsthate.com
- Counter Terrorism Internet Referral Unit: www.gov.uk/report-terrorism
- True Vision: www.report-it.org.uk

Child-on-Child abuse, including bullying, sexual violence and harassment

- Rape Crisis: <https://rapecrisis.org.uk>
- Brook: www.brook.org.uk
- Disrespect Nobody: www.disrespectnobody.co.uk
- Upskirting – know your rights: www.gov.uk/government/news/upskirting-know-your-rights
- Lucy Faithfull Foundation: www.lucyfaithfull.org.uk
- Stop it Now! www.stopitnow.org.uk
- Parents Protect: www.parentsprotect.co.uk
- Anti-Bullying Alliance: www.anti-bullyingalliance.org.uk
- Diana Award: www.antibullyingpro.com
- Kidscape: www.kidscape.org.uk
- Centre of expertise on Child Sexual Abuse: www.csacentre.org.uk

Online Safety

- NCA-CEOP: www.ceop.police.uk and www.thinkuknow.co.uk
- Internet Watch Foundation (IWF): www.iwf.org.uk
- Childnet: www.childnet.com
- UK Safer Internet Centre: www.saferinternet.org.uk
- Report Harmful Content: <https://reportharmfulcontent.com>
- Marie Collins Foundation: www.mariecollinsfoundation.org.uk
- Internet Matters: www.internetmatters.org
- NSPCC: www.nspcc.org.uk/online-safety
- Get Safe Online: www.getsafeonline.org
- Parents Protect: www.parentsprotect.co.uk
- Cyber Choices: <https://nationalcrimeagency.gov.uk/what-we-do/crime-threats/cyber-crime/cyberchoices>
- National Cyber Security Centre (NCSC): www.ncsc.gov.uk

Mental Health

- Mind: www.mind.org.uk
- Moodspark: <https://moodspark.org.uk>
- Young Minds: www.youngminds.org.uk
- We are with you: www.wearewithyou.org.uk/services/kent-for-young-people/
- Anna Freud: www.annafreud.org/schools-and-colleges/